

PERSONAL NAVIGATOR



Sunrise: 6:29 a.m. Sunset: 7:05 p.m.
 Evening Attire: Cruise Casual
 All Ashore: 1:00 p.m. All Aboard: 5:30 p.m.

Tuesday: Partly Sunny High: 79°F/26°C
 Wednesday: Partly Sunny High: 84°F/29°C

TUESDAY, APRIL 16, 2013

COSTA MAYA, MEXICO

Disney WISHES

On the eve of their graduation, three best friends go on a magical journey down the wishing well. A host of Disney characters help them discover the connection between children who are becoming adults, and adults who stay in touch with being a kid at heart.

**Walt Disney Theatre
 Deck 3 & 4, Forward
 6:15 p.m. & 8:30 p.m.**



Assistance available at the entrance to the Walt Disney Theatre 30 minutes prior to show time.

Costa Maya Port Information

Costa Maya is a tourist region located on the Yucatán Peninsula 100 miles south of Playa del Carmen near the border of Belize in Mexico. Comprised of two small villages, Mahahual and Xcalak, Costa Maya provides a picture-perfect getaway the entire family is sure to love.

Early Mayans were predominant in the area from 200 B.C. to 900 A.D. In the 16th century, English pirates ravaged the coast and battled the Spanish for control of the region. At the end of the 19th century, the Mexican Navy took over the land. A treaty with Britain was signed soon after limiting the territorial rights of Mexico, thereby forcing Mexico to build a new trade port in Xcalak.

By the 1950's, the economy was flourishing as businesses - including stone and wood construction companies - made the area a supply center for the region. Steady growth continued until the mid-1990's when the government outlined a plan to make Costa Maya a tourist destination. Today, tourism is Costa Maya's main economic revenue stream and it's easy to understand why, thanks to the island's plethora of unspoiled natural beauty that has remained untouched for thousands of years.

DOCKING

The ship will dock at the Puerto Costa Maya, located approximately 1/2 mile north of Mahahual.

Bring the family out to this interactive dance party featuring The Three Amigos. We will party with Donald Duck, learn Salsa, Merengue and have a Latin good time!

**D Lounge,
 Deck 4, Midship,
 10:15 p.m.**

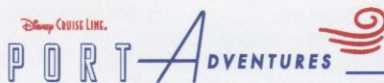
Don't Miss:

LIVE Art Auction Featuring David Schluss
The Tube, Deck 4, Aft - 10:00 a.m. (Preview at 9:30 a.m.)
 Going once, going twice, sold! Don't miss out on the action of this bidding war where you'll have the chance to claim amazing pieces of artwork for your own, including original artwork by well-known artist David Schluss. Art preview at 9:30 a.m. followed by live auction at 10:00 a.m., The Tube, Deck 4, Aft.

Disney Channel on Deck
Deck Stage, Deck 11, Midship, - 11:00 a.m.
 Don't change that channel! It's time for a Disney Channel pool party! Your Cruise Staff will host exciting games and contests in between your favorite Disney Channel shows! So sit back, relax, and enjoy the sun!

50 More Movie Quotes Trivia (18+)
O'Gills Pub, Deck 4, Aft - 4:00 p.m.
 "Life is like a box of Chocolates" Know the movie? Join your Cruise Staff and test your Movie Quote knowledge.

80's Music Challenge (18+)
The Tube, Deck 4, Aft - 10:30 p.m.
 "Moon Walk" back to the 80's, as we put your musical knowledge of the decade to the test.



Please check your tour tickets for meeting times and locations. Visit the Port Adventures Desk, Deck 5, Midship for any questions.

DINNER MENU Animator's Palate: Prince & Princess Menu
 Enchanted Garden: Prince & Princess Menu
 Royal Court: Prince & Princess Menu

DRINK OF THE DAY Key Lime Margarita (Alcoholic)
 Cranberry NO-Jito (Non Alcoholic)

IMPORTANT NUMBERS

Fire/Security: 7-3001
 Medical Emergency: 7-3000
 Health Center: 7-1923

FUN FOR ALL AGES HIGHLIGHTS



WAKE UP WITH DISNEY JUNIOR
D Lounge, Deck 4, Midship - 8:30 a.m.

What happens when you experience unlimited fun with your favorite Disney Junior shows? An exciting dance party designed especially for preschoolers ages seven and under.

COZUMEL HIGHLIGHTS PRESENTATION

Buena Vista Theatre, Deck 4 & 5, Forward - 11:00 a.m.

Last chance to learn about the amazing shopping ashore this cruise. Join your Shopping Guides Johan & Marissa for all of your last minute tips from Vanilla to Diamonds. Don't miss the raffle to win beautiful Jewelry!

DISNEY TUNE TRIVIA

La Piazza, Deck 4, Aft - 11:00 a.m.

Join your Cruise Staff and pianist Gayla Smith, as they put your Disney Tune knowledge to the test.



DISNEY CHANNEL ON DECK

Deck Stage, Deck 11, Midship - 11:00 a.m.

Don't change that channel! It's time for a Disney Channel afternoon poolside! Your cruise staff will host exciting games and contests in between your favorite Disney Channel shows! So sit back, relax, and enjoy the sun!

PLAYHOUSE D LOUNGE

D Lounge, Deck 4, Midship - 5:00 p.m.

Calling our youngest of cruisers! Here is a special Playtime that is just for you. Come meet new friends and join in on the fun as your Cruise Staff team takes you through interactive activities made just for you!

DISNEY TRIVIA

D Lounge, Deck 4, Midship - 9:45 p.m.

Navigate your way through another round of questions to test how much you really know about Disney.

ADULT ACTIVITY HIGHLIGHTS

SENSES SPA FITNESS CLASSES & SEMINARS

Sunrise Stretch - Donald's Pool - 7:00 a.m.

Fab Abs - Senses Fitness Center - 7:30 a.m. 5:00 p.m.

Body Sculpt Boot Camp (Nom. Fee) - Senses Fitness Center - 9:00 a.m.

Secrets to a Flatter Stomach - Senses Spa & Salon - 10:00 a.m.

Back Pain Solutions - Outlook, Deck 14, Mid - 10:30 a.m.

Facial Workshop - Senses Spa & Salon - 11:00 a.m.

Posture Analysis - Senses Fitness Center - 11:30 a.m.

Pathway to Yoga - Senses Fitness Center - 4:00 p.m.



CLUB
18*21

CLUB 18*21 - SOCIAL

Cove Cafe, Deck 11, Forward - 11:45 a.m.

CLUB 18*21 - ARR-CADE SOCIAL

Arr-cade, Deck 11, Aft - 5:00 p.m.

CLUB 18*21 - MIXER

O'Gills Pub, Deck 4, Aft - 10:00 p.m.

ART OF THE THEME SHOW TOUR (18+)

Pre-Book at Guest Services, Deck 3, Midship - 9:30 a.m.

Join us on a guided ship tour and discover the key ingredients that make the Disney Fantasy cruise ship one-of-a-kind.

PUB QUIZ

O'Gills Pub, Deck 4, Aft - 10:15 a.m., 6:30 p.m. & 8:45 p.m.

Join us as we test your knowledge against your fellow Guests at our Pub Quiz challenge.

50 MOVIE QUOTES TRIVIA

O'Gills Pub, Deck 4, Aft - 4:00 p.m.

"Life is like a box of Chocolates" Know the movie? Join your Cruise Staff and test your Movie Quote knowledge.

80'S MUSIC CHALLENGE

The Tube, Deck 4, Aft - 10:30 p.m.

"Moon Walk" back to the 80's, as we put your musical knowledge of the decade to the test.

80'S/90'S REMIX WITH GUEST DJ CLINT KUPER

The Tube, Deck 4, Aft - 11:00 p.m.

Join Guest DJ Clint Kuper, as he spins the tunes and remix the 80's & 90's!



DOUBLE UP JACKPOT BINGO

D Lounge, Deck 4, Midship

Card Sales - 7:15 p.m.

Game Starts - 7:30 p.m.

Special double up session: All electronic cards purchased will be doubled. The snowball jackpot continues to grow and could be won today!



YOUTH ACTIVITY HIGHLIGHTS

DINE & PLAY

A convenience for families dining at 8:15 p.m., our Youth Activities Counselors will be available at 9:15 p.m. at the entrance of Royal Court, Enchanted Garden and Animator's Palate dining rooms to bring registered children to join the fun in the Youth Activity areas.



Deck 5, Midship (7-1440)
(3-12 years old) 9:00 a.m. - 11:00 p.m.

JOURNEY TO NEVERLAND

10:30 a.m.

Join Peter Pan as he takes you on an adventure on the Magic Playfloor.

DISNEY ANIMATION: CREATING A CHARACTER

1:45 p.m.

Go behind the scenes at Walt Disney Animation Studios as Walt Disney himself talks about his most famous characters, then learn the basic techniques of drawing Mickey and Donald in this fun and interesting enrichment program.



Deck 5, Midship (7-1445)
(3-12 years old) 9:00 a.m. - 12:00 mid

SUPER SLOPPY SCIENCE

9:30 a.m.

Join Professor Make-O-Mess in some of the most extreme experiments you will ever see in the world of Super Sloppy Science!

MAGIC SHOW

11:15 a.m.

Come and watch the best Magic Show on the high seas!



Deck 13, Midship (7-9743)
(11-14 years old) 10:00 a.m. - 1:00 a.m.

ANIMATION CELLS

12:00 p.m.

Learn what it takes to be a Disney Animator, then put your new skills to the test as you create your very own animation cell.

ANYONE CAN COOK

2:30 p.m.

Anyone can cook as we work together to create some of our favorite treats.



Entrance on Deck 4, Forward (7-9418)
(14-17 years old) 10:00 a.m. - 2:00 a.m.

DISNEY ANIMATION: CREATING A CHARACTER

5:00 p.m.

Go behind the scenes at Walt Disney Animation Studios as Walt Disney himself talks about his most famous characters, then learn the basic techniques of drawing Mickey and Donald in this fun and interesting enrichment program.

ESPN DREAM TEAM DRAFT DAY - FOOTBALL

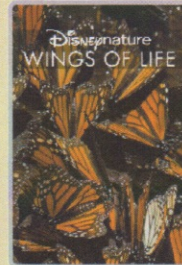
7:15 p.m.

Join the "Commissioner" and engage in this interactive fantasy football draft unlike anything you've ever seen! Can YOU draft the greatest football team of All-Time?

BUENA VISTA THEATRE

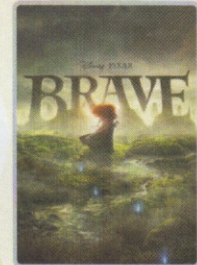
Today's Movies

OC - Open Captioning



1:45 p.m.

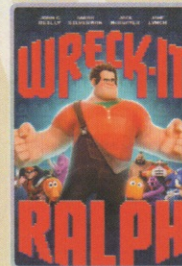
Duration: 1 hr 17 min
Rating: G



3:30 p.m.

Duration: 1 hr 41 min
Rating: PG

DOLBY 3D

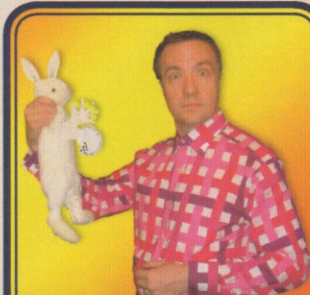


5:30 p.m. & 8:00 p.m.
Duration: 1 hr 53 min
Rating: PG

DOLBY 3D



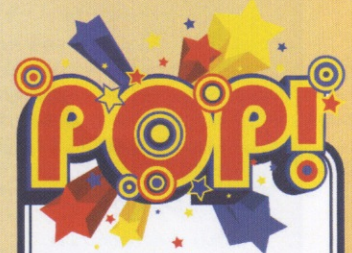
10:30 p.m.
Duration: 2 hr 22 min
Rating: PG-13



FAMILY CABARET

Featuring the
Comedy & Magic of
Levent,
as he entertains the
entire family in this
fun-filled show.

*The Tube,
Deck 4, Aft,
7:30 p.m.*



Have you been told you are
full of useless information
about pop culture?
If the answer is "Yes,"
then you have what it takes
to play the high energy
game show all about
the world of Pop!

*The Tube (18+),
Deck 4, Aft,
10:00 p.m.*

YOUTH ACTIVITIES OPEN HOUSE

Open House is an opportunity for all to come and participate in a variety of exciting activities and free time in the Oceaneer Club, Lab and Edge throughout the cruise. During these times secured programming will still be offered in the other venue for those looking to check their children into care.

Edge: 9:00 a.m. - 10:00 a.m.

Disney's Oceaneer Lab: 1:00 p.m. - 2:30 p.m.

Disney's Oceaneer Club: 9:00 a.m. - 10:00 am

MORE TO ENJOY WHILE ONBOARD



COZUMEL SHOPPING PRESENTATION

Cozumel is the largest tax and duty free shopping port in the Western Caribbean. Learn about everything from Vanilla to Diamonds & Swiss Time Pieces. All to attend will receive a free Sea Shell Charm and the chance to win a Larimar gemstone pendant. 11:00 a.m. Buena Vista Theatre, Decks 4 & 5, Forward



DISNEY VACATION CLUB® GROUP PREVIEW

Want to learn more about taking magical vacations year after year? Please see a Disney Vacation Club representative on Deck 4, Midship, or call 7-2805 from your stateroom phone for more information about our interactive group presentation.



PLAN YOUR NEXT CRUISE

Enjoying the Cruise? Book another Disney Cruise Line vacation today! Today is a great day to visit the Future Cruise Sales Desk, Deck 4, Midship, or call extension 7-2848 to find out how you can save 10%, receive up to a \$200 onboard credit, and pay a reduced deposit on your next cruise!

ONBOARD AIRLINE CHECK IN

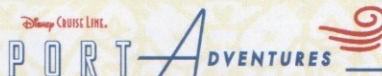
If you would like to have your boarding passes printed for you onboard and have your luggage taken to the airport for you, register by midnight tomorrow. If you have a Disney Cruise Line airport transfer to Orlando International Airport and fly with one of the participating airlines, stop at Guest Services, Deck 3, Midship to register.

ARR-CADE

Where can you be a ninja, play the guitar like a rock star, race a car down the streets of Tokyo and along the way WIN some great prizes? Arr-cade located Deck 11, Aft, where the pirates play.

ON DEMAND TV

Watch Disney movies, Hollywood features, ABC Shows, and even captioned content, plus much more "On Demand" for FREE in the comfort of your stateroom! Bookmark your movie and come back to watch it later. Press MENU on your stateroom television remote control, and follow the prompts.



Welcome to Costa Maya, a secluded destination on Mexico's stunning Riviera Maya! The port of Costa Maya is booming and there are many amazing new Port Adventures to choose from. There is limited availability on tours, so stop by the Port Adventures Desk, Deck 5, Midship, to reserve your place. Don't forget to plan ahead for Castaway Cay, where only a few Stingray encounters remain available.



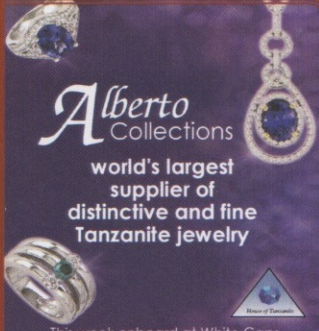
SALON TASTER SPECIAL

<ul style="list-style-type: none"> · Scalp Massage · European Facial · Hand Treatment · Sunglow Makeover · Conditioning Hair Treatment · Eye Collagen Treatment 	<ul style="list-style-type: none"> · Foot & Ankle Massage · Neck & Shoulder Massage <p style="text-align: center;">Three for 99.00 Five for 119.00 All Eight for 139.00</p>
---	---

ALBERTO TRUNK SHOW

House of Tanzanite special trunk show of fine Tanzanite, colored Diamonds, Alexandrite, and Emerald jewelry from classic chic to over the top elegant designs hand made in the US.

This week onboard at Whitecaps, Deck 3, Forward



Alberto Collections

world's largest supplier of distinctive and fine Tanzanite jewelry

This week onboard at White Caps

Shutters

DIGITAL PACKAGES

Do you only need a small number of digital images of your photos? We now offer two digital packages where you can choose your selected images in the comfort of your own home! Send them to friends or upload them on social media sites, the choice is yours! Please see one of our friendly Shutters staff to explain this great new product. Your photos will be available for viewing on our interactive kiosks in Shutters Digital as well as in your personal photo folder in Shutters, Deck 4 Midship, Conditions applies.

**Please note that photos are available for viewing on our interactive photo kiosks approximately five hours after being taken and are only available for purchase during this cruise.*

SHOPPING

FRAGRANCE OF THE DAY

Stop by Whitecaps to test our selected fragrance today! Deck 3, Forward.

SILENT AUCTION - DAVID SCHLUSS

Stop by the Vista Gallery and place your bid on a piece of artwork created by David Schluss, an artist who uses only his hands and fingers instead of paintbrushes. This silent auction will be closing Thursday at 11:00 p.m. Vista Gallery, Deck 4, Midship.

H₂O BATH COLLECTION

Treat yourself to the ultimate indulgence with H₂O bath products. H₂O offers shampoo, conditioner, lip balm, hydrating body lotion and after sun care. Available in Whitecaps, Deck 3, Forward.

ALBERTO COLLECTION HOUSE OF TANZANITE PRESENTATION

Come learn about the beauty of Tanzanite, one of the world's most elegant gems. This is a one-of-a-kind presentation you don't want to miss. Today in Whitecaps, Deck 3, Forward at 11:00 a.m.

GODIVA®

Stop by Whitecaps to satisfy your sweet tooth with GODIVA® chocolate. Receive a free GODIVA® tablet case with a \$50 purchase and a free GODIVA® gold tote bag with a \$60 purchase of any GODIVA® items. Deck 3, Forward.

OFFICER PIN TRADING

Come and trade pins with the officers of the Disney Fantasy at 7:30 p.m. in Preludes, Deck 3, Forward.

Due to port regulations, when the ship is docked, the stores will remain closed.

IMPORTANT INFORMATION

Security Notice
All Guests (including children) who wish to disembark the ship are required to present their Key to the World card at the gangway. A photo ID is also required for those Guests who are 18 years of age or older. Guests under the age of 18 are required to have a Parent, Guardian or other responsible adult sign an authorization form at the time it is given out if they wish to go ashore unaccompanied. Authorization forms are available at the gangways and Guest Services.

Please Note:
Please remember to use plenty of sunscreen & mosquito/ Insect repellent when venturing ashore.

Cold and Flu Reminder
Please wash hands frequently and thoroughly, particularly before meals. Contact the Health Center by dialing 7-1923, should anyone in your party become ill.

Corridor Quiet Hours
As a courtesy to all our Guests, please recognize quiet hallway hours from 10:00 p.m. til 8:00 a.m.

Inclement Weather
For the safety of all Guests, outdoor events may be changed due to unforeseen weather conditions.

Environmental Message
With Disney's commitment to the Environment, please refrain from throwing anything over the Ship's side. Thank you!

No Reserved Seats Policy
As a courtesy to all our Guests, we kindly advise that the saving of seats is not permitted in the Walt Disney Theatre, and the saving of the sun loungers is not permitted on Deck 11, 12, and 13. Items left unattended will be returned to lost and found at Guest Services, Deck 3 Midship.

Smoking
For the comfort of our guests the following areas are designated as Smoking areas: - Promenade Deck (Deck 4), smoking is permitted Port Side, Aft only from 6:00 p.m. to 6:00 a.m.
- Currents - Deck 13, Forward, Port Side.
- Meridian Bar - Deck 12, Aft, Port Side, outside.
- Smoking is permitted on stateroom verandahs. Smoking is prohibited inside all guest staterooms. Guests found smoking in their staterooms will be charged a \$250 stateroom recovery fee.

Walt Disney Theatre
Theatrical performances may use artificial fog, strobe lights, pyrotechnics and other special effects. For the safety of our performers and the comfort of those around you, the use of any photography, video recording device or any electronic equipment is prohibited.

Verandah Safety
Please do not leave any combustible materials on your balcony when not present in your stateroom for safety reasons.

Morning	8:30	8:45	9:00	9:15	9:30	9:45	10:00	10:15	10:30	10:45	11:00	11:15	11:30	11:45	12:00	12:15	12:30	12:45	1:00	1:15	1:30
FUNNEL VISION	The Jungle Book (G) Funnel Vision						Disney Channel on Deck Funnel Vision						Pinocchio (G) Funnel Vision								
BUENA VISTA THEATRE	Hypnosis Seminar with Ricky Kalmon (18+)												Cozumel Highlights Presentation								
CHARACTER	Mickey Dk 4, Mid			Peter Pan Dk 4, Mid			Princess Gathering Lobby Atrium			Tinker Bell Daisy Lobby Atrium (V) Dk 4, Mid			Minnie Tinker Bell Dk 4, Mid Lobby Atrium (V)								
FUN FOR ALL AGES	Disney Animation: Persistence of Vision D Lounge			Disney Vacation Club Group Preview D Lounge			Disney Channel on Deck Deck Stage						Board Games Available in O'Gills Pub								
	Crafts: 3D Crafts La Piazza			Art Auction featuring Guest Artist David Schluss The Tube			Disney Tunes Trivia La Piazza			Port Adventures - Please check your tickets for meeting times and locations						Cozumel Highlights Presentation Buena Vista Theatre			Last Minute Shopping Advice Gangway		
ADULTS	Friends of Bill W. Outlook, Deck 14, Mid			Art of The Theme Show Tour (18+) Pre-Book at Guest Services			Pub Quiz O'Gills Pub			Posture Analysis Senses Fitness Center											
	Body Sculpt Boot Camp Senses Fitness Center			Secrets To A Flatter Stomach Senses Spa & Salon			Back Pain Solutions Outlook, Deck 14, Mid			Facial Workshop Senses Spa & Salon			Club 18*21 - Social Cove Cafe								
VIBE 14-17 YEARS OLD	Coffee Break						Dream Now! Sea How! - Theatrical						Sun Deck Fun								
EDGE 11-14 YEARS OLD	Open House			Checkers Challenge			Four Square			Animation Cells			Chillin' in the Edge								
OCEANEER LAB 3-12 YEARS OLD	Super Sloppy Science						GAGA Ball			Craft Corner			Lunch								
							Human Bingo			Magic Show			Open House - Magic Playfloor								
OCEANEER CLUB 3-12 YEARS OLD	Open House			Journey to Neverland			Make Your Own Puppet			Lunch			Parachute Games								
	Aloha Luau						Puzzle Playtime			Matinee Movie											

Afternoon	1:45	2:00	2:15	2:30	2:45	3:00	3:15	3:30	3:45	4:00	4:15	4:30	4:45	5:00	5:15	5:30	5:45	6:00	6:15	6:30	6:45			
FUNNEL VISION	Tangled (PG) Funnel Vision						Hercules (G) Funnel Vision						High School Musical (G) Funnel Vision											
BUENA VISTA THEATRE	Disney Signature: Wings of Life (G) Duration: 1 Hour 17 Minutes						Brave (PG) - With Open Captioning Duration: 1 Hour 41 Minutes						Wreck-It Ralph (PG) Duration: 1 Hours 53 Minutes >7:23 p.m.											
CHARACTER													Mickey Lobby Atrium (P)		Buzz Lobby Atrium (V)		Cinderella Lobby Atrium (H)		Phineas & Ferb Lobby Atrium (H)		Belle Lobby Atrium (P)			
FUN FOR ALL AGES	Board Games Available in O'Gills Pub						Live Guitar with John Kevish Deck 12, Forward						Live Music with The Switch Lobby Atrium											
	Family Crafts - Paper Plane Making La Piazza						Midship Detective Agency - Deck 2 & 5, Midship						Xbox® Kinect™ - Wipeout Challenge O'Gills Pub						Walt Disney Theatre					
ADULTS	Informal Card Play O'Gills Pub						50 Movie Quotes Trivia O'Gills Pub						Club 18*21 - Arr-Cade Social Arr-CADE						Pub Quiz O'Gills Pub					
	Pathway to Yoga Senses Fitness Center						Fab Abs Senses Fitness Center						Disney Animation: Creating a Character						Anyone Can Cook					
VIBE 14-17 YEARS OLD	Animation Cells			Games Galore			Dive into DJ'ing			Disney Animation: Creating a Character						Anyone Can Cook								
EDGE 11-14 YEARS OLD	Chillin' in the Edge			Anyone Can Cook			Pizza Party			GAGA Ball			Ninja			Disney Sing It								
OCEANEER LAB 3-12 YEARS OLD	Open House			Xbox® Kinect™ Tournament			Detective School			Marshmallow Olympics						Wii Challenge								
	Craft Madness			Bingo			Youth Dinner						Parachute Games											
OCEANEER CLUB 3-12 YEARS OLD	Matinee Movie			Play-Doh Creations			Once Upon a Time			Monster's Game Galore						Create A Picture								
	Disney Animation: Creating a Character			Memory Wall			Connect Four Challenge			Picture This						Ball Games								
OUT AND ABOUT	Basketball Challenge Goofy's Sports Deck																							

Evening	7:00	7:15	7:30	7:45	8:00	8:15	8:30	8:45	9:00	9:15	9:30	9:45	10:00	10:15	10:30	10:45	11:00	11:15	11:30	11:45	12:00
FUNNEL VISION	High School Musical 2 (G) Funnel Vision						Remember the Titans (PG) Funnel Vision														
BUENA VISTA THEATRE	Wreck-It Ralph in Dolby 3D - (PG) Duration: 1 Hour 53 Minutes						Wreck-It Ralph (PG) - (PG) Duration: 1 Hour 53 Minutes						The Avengers (PG-13) Duration: 2 Hours 22 Minutes >12:54 a.m.								
CHARACTER	Cinderella Lobby Atrium (P)		Buzz Lobby Atrium (V)		Phineas & Ferb Lobby Atrium (H)		Woody Lobby Atrium (V)		Pluto Preludes		Phineas & Ferb Lobby Atrium (H)		Mickey Lobby Atrium (P)								
FUN FOR ALL AGES	Bingo Pre Sales D Lounge		Double Up Jackpot Bingo D Lounge		Walt Disney Theatre						Disney Trivia D Lounge		Family Superstar Karaoke D Lounge		Viva Fiesta D Lounge						
	Family Cabaret: Levent The Tube - Magic		Officer Pin Trading Preludes		Live Music with The Switch Lobby Atrium						Jazz Ballads with The Switch Lobby Atrium										
ADULTS	Live Guitar with John Kevish O'Gills Pub			Pub Quiz O'Gills Pub			POP! The Tube						80's Music Challenge The Tube		80's/90's Remix with Guest DJ Clint Kuper The Tube						
	Club 18*21 Mixer O'Gills			Live Music with June Gypsies La Piazza																	
VIBE 14-17 YEARS OLD	ESPN Dream Team Draft Day - Football			Smoothie Time			Pump It Up			Mad Gab			Gender Wars								
EDGE 11-14 YEARS OLD	Elephant Soccer		That's Hilarious		Photo Hunt		Magic Show		Picture This		Gender Wars		GAGA Ball								
OCEANEER LAB 3-12 YEARS OLD	Friendship Bracelets		Charades		Piston Cup Challenge						Get the Hook		4 Corners		Cartoon Corner						
	Anyone Can Cook		Stop The Boat								Games Galore										
OCEANEER CLUB 3-12 YEARS OLD	Create A Picture Frame		Magic Playfloor		Bingo		Coloring Corner		Camp Rocking Out!		Cartoon Corner										
	Ball Games		Dance Party																		

Symbol for activities that will be repeated during the cruise
 Youth Activities Open House
 Fold along the dotted lines and take me with you so you don't miss any of the fun!
 IN THE SPOTLIGHT SERIES
 SOLVE IT! SERIES
 JUMP UP! SERIES
 CREATE & INVENT SERIES
 CLUBHOUSE SERIES
 STORYBOOK SERIES

TUESDAY, APRIL 16, 2013 - COSTA MAYA, MEXICO

BUENA VISTA THEATRE

OC - Open Captioning

DOLBY 3D

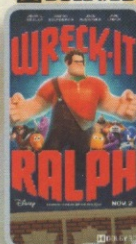
DOLBY 3D



1:45 p.m.
Duration: 1 hr 17 min
Rating: G



3:30 p.m.
Duration: 1 hr 41 min
Rating: PG



5:30 p.m. & 8:00 p.m.
Duration: 1 hr 53 min
Rating: PG



10:30 p.m.
Duration: 2 hr 22 min
Rating: PG-13

Character Appearances

MICKEY MOUSE

Deck 4, Balcony
9:00 a.m. & 7:45 p.m.
Lobby Atrium (P)
4:45 p.m. & 10:00 p.m.

PETER PAN

Deck 4, Balcony - 9:30 a.m.

GOOFY

Goofy's Sports Deck - 10:00 a.m.
Deck 4, Balcony - 10:00 p.m.

PRINCESS GATHERING

Lobby Atrium - 10:00 a.m.

PRINCESS MINNIE

Deck 4, Balcony
10:15 a.m. & 11:15 a.m.

TINKER BELL

Lobby Atrium (V)
10:30 a.m. & 11:30 a.m.

DAISY DUCK

Deck 4, Balcony - 10:45 a.m.

PINOCCHIO

Deck 4, Balcony - 4:45 p.m.

BUZZ LIGHTYEAR

Lobby Atrium (V) - 5:00 p.m.,
7:30 p.m. & 10:00 p.m.

PRINCESS TIANA

Deck 4, Balcony - 5:15 p.m.

CINDERELLA

Lobby Atrium (P)
5:15 p.m. & 7:15 p.m.

PHINEAS & FERB

Lobby Atrium (H) - 5:30 p.m.,
7:45 p.m. & 9:45 p.m.

WOODY & JESSIE

Lobby Atrium (V) - 5:30 p.m.,
8:00 p.m. & 9:30 p.m.

BELLE

Lobby Atrium (P)
5:45 p.m. & 8:00 p.m.

DONALD DUCK

Deck 4, Balcony
5:45 p.m. & 9:30 p.m.

PLUTO

Deck 4, Balcony - 7:15 p.m.
Preludes - 9:30 p.m.

MINNIE MOUSE

Lobby Atrium (P) - 9:30 p.m.

(H) Hallway - (S) Starboard Side - (P) Port Side - (V) Vestibule

For details of daily Disney character appearances, refer to the character line in your Navigator Grid or the digital character board in the Lobby Atrium.

YOUTH ACTIVITIES THEMED EXPERIENCES

CLUBHOUSE SERIES focuses on movement and features content which appeals to younger children.

STORYBOOK SERIES is designed with a strong connection to the Disney classic stories.

JUMP UPI SERIES includes large ground games & movement-oriented activities.

CREATE & INVENT SERIES will have a tactile focus allowing children to create and admire their work.

IN THE SPOTLIGHT SERIES focuses on children's stage presence with lots of activities and enthusiasm.

SOLVE IT! SERIES are less active, but will challenge children with problem/solutions-based activities.

YOUTH ACTIVITIES OPEN HOUSE

A non-secured program with activities for families, adults and children of all ages to enjoy together.

SHIP DIRECTORY

YOUTH ACTIVITIES

DISNEY'S OCEANEER CLUB	DECK 5, MID	9:00 AM - 11:00 PM
DISNEY'S OCEANEER LAB	DECK 5, MID	9:00 AM - 12:00 MID
EDGE	DECK 13, MID	10:00 AM - 1:00 AM
VIBE	DECK 4, FWD	10:00 AM - 2:00 AM
IT'S A SMALL WORLD NURSERY	DECK 5, MID	9:00 AM - 11:00 PM

RECREATION

AQUADUCK	DECK 12, MID	9:00 AM - 10:00 PM
AQUALAB	DECK 12, AFT	1:00 PM - 6:00 PM
DONALD'S POOL	DECK 11, MID	6:00 AM - 12:00 MID
GOLF/SPORTS SIMULATORS	DECK 13, AFT	9:00 AM - 6:00 PM
GOOFY GOLF	DECK 13, AFT	8:00 AM - 10:00 PM
GOOFY'S SPORTS DECK	DECK 13, AFT	8:00 AM - 6:00 PM
MICKEY'S POOL	DECK 11, MID	6:00 AM - 11:00 PM
MICKEY'S SLIDE	DECK 11, MID	9:00 AM - 6:00 PM
MIDSHIP DETECTIVE AGENCY	DECK 2 & 5, MID	9:00 AM - 10:00 PM
NEMO'S REEF	DECK 11, MID	9:00 AM - 7:00 PM
PORT ADVENTURES DESK	DECK 5, MID	9:00 AM - 1:00 PM 7:00 PM - 8:30 PM
QUIET COVE POOL	DECK 11, FWD	6:00 AM - 12:00 MID
SATELLITE FALLS	DECK 13, FWD	6:00 AM - 6:00 PM
SENSES FITNESS CENTER	DECK 11, FWD	6:30 AM - 10:00 PM

GENERAL INFORMATION

ARR-CADE	DECK 11, AFT	24 HOURS
DISNEY VACATION CLUB	DECK 4, MID	5:30 PM - 10:00 PM
FUTURE CRUISE SALES DESK	DECK 4, MID	9:00 AM - 12:00 PM 5:00 PM - 6:00 PM 7:30 PM - 10:00 PM
GUEST SERVICES	DECK 3, MID	24 HOURS
MEDICAL HEALTH CENTER	DECK 1, FWD	9:30 AM - 11:00 AM 4:30 PM - 7:00 PM
PORT & SHOPPING DESK	DECK 4, MID	10:00 AM - 11:30 AM
PRELUDES	DECK 3, FWD	5:45 PM - 6:30 PM 8:00 PM - 8:45 PM
SENSES SPA AND SALON	DECK 11, FWD	8:00 AM - 10:00 PM
SHUTTERS PHOTO GALLERY	DECK 4, MID	5:00 PM - 10:30 PM
SHUTTERS DIGITAL	DECK 4, MID	24 HOURS

SHOPPING

BIBBIDI BOBBIDI BOUTIQUE	DECK 5, MID	9:00 AM - 9:00 PM
MICKEY'S MAINSAIL	DECK 3, FWD	9:00 AM - 11:00 AM 6:30 PM - 11:00 PM
QUACKS	DECK 11, MID	
SEA TREASURES	DECK 3, FWD	9:00 AM - 11:00 AM 6:30 PM - 11:00 PM
VISTA GALLERY	DECK 4, MID	7:00 PM - 10:00 PM
WHITECAPS	DECK 3, FWD	9:00 AM - 11:00 AM 6:30 PM - 11:00 PM
WHOZITS & WHATZITS	DECK 11, MID	9:00 AM - 11:00 AM

DINNER MENU

Animator's Palate: Prince & Princess
Enchanted Garden: Prince & Princess
Royal Court: Prince & Princess
Dining Times: 5:45 p.m. & 8:15 p.m.

DRINK OF THE DAY

Key Lime Margarita (Alcoholic)
Cranberry No-Jito (Non Alcoholic)

WEATHER FORECAST

Tuesday: Partly Sunny
High: 79°F/26°C
Wednesday: Partly Sunny
High: 84°F/29°C

Evening Attire: Cruise Casual

DINING & LOUNGES

BREAKFAST

CABANAS CONTINENTAL	DECK 11, AFT	7:00 AM - 7:30 AM
CABANAS	DECK 11, AFT	7:30 AM - 11:30 AM
ENCHANTED GARDEN	DECK 2, MID	8:00 AM - 10:45 AM
ROYAL COURT	DECK 3, MID	8:00 AM - 9:30 AM

LUNCH

CABANAS	DECK 11, AFT	11:30 AM - 2:15 PM
FILLMORE'S FAVORITES	DECK 11, MID	10:30 AM - 6:00 PM
LUIGI'S PIZZA	DECK 11, MID	10:30 AM - 6:00 PM
ROYAL COURT	DECK 3, MID	12:00 PM - 1:30 PM
TOW MATER'S GRILL	DECK 11, MID	10:30 AM - 11:00 PM

DINNER

ANIMATOR'S PALATE	DECK 3, AFT	5:45 PM & 8:15 PM
ENCHANTED GARDEN	DECK 2, MID	5:45 PM & 8:15 PM
ROYAL COURT	DECK 3, MID	5:45 PM & 8:15 PM
CABANAS TABLE SERVICE	DECK 11, AFT	6:30 PM - 8:30 PM
PALO (18+) (RESERVATIONS REQ. & NOM. FEE APPLIES)	DECK 12, AFT	6:00 PM - 8:30 PM
REMY (18+) (RESERVATIONS REQ. & NOM. FEE APPLIES)	DECK 12, AFT	6:00 PM - 8:30 PM

LATE NIGHT SNACKS

LA PIAZZA (18+)	DECK 4, AFT	10:45 PM - 11:45 PM
LUIGI'S PIZZA	DECK 11, MID	9:30 PM - 12:30 AM

ADDED FEATURES

BEVERAGE STATION	DECK 11, MID	24 HOURS
EYE SCREAM	DECK 11, MID	11:00 AM - 11:00 PM
ROOM SERVICE	DIAL 0	24 HOURS

ENTERTAINMENT - LOUNGES - BARS

Adults must be 21 and older to consume alcoholic beverages.

BON VOYAGE	DECK 3, MID	10:30 AM - 11:00 PM
COVE BAR (18+)	DECK 11, FWD	10:00 AM - 11:00 PM
COVE CAFE (18+)	DECK 11, FWD	7:00 AM - 12:00 MID
CURRENTS (18+)	DECK 13, FWD	10:00 AM - 11:00 PM
D LOUNGE	DECK 4, MID	SHOWTIMES
FROZONE TREATS	DECK 11, MID	11:00 AM - 11:00 PM
LA PIAZZA	DECK 4, AFT	4:30 PM - 12:00 MID
MERIDIAN (18+)	DECK 12, AFT	5:00 PM - 12:00 MID
O'GILLS PUB (18+ AFTER 9:00 PM)	DECK 4, AFT	4:00 PM - 12:00 MID
OOH LA LA (18+)	DECK 4, AFT	5:00 PM - 12:00 MID
OUTLOOK	DECK 14, MID	SUNSET TIMES
SKYLINE (18+)	DECK 4, AFT	5:00 PM - 12:00 MID
THE TUBE (18+)	DECK 4, AFT	10:00 PM - 2:00 AM
VISTA CAFE	DECK 4, MID	7:30 AM - 11:00 PM
WAVES	DECK 12, AFT	10:00 AM - 6:30 PM

Consumers who order raw or partially cooked, ready-to-eat food of animal origin, are hereby informed that the food is not sufficiently cooked to ensure its safety.

All Ashore: Approx. 1:00 p.m.

All Aboard: 5:30 p.m.

IMPORTANT INFORMATION

Please check your Port Adventure tour tickets for meeting times and locations. Visit the Port Adventures Deck 5, Midship, for any questions.

SHIP'S AGENT IN COSTA MAYA IMPORTANT NUMBERS

Sr. Marco Souza
Carmichel, Coordinador General,
Aconsur, Mahahual, Q. Roo, México
Tel: 52 983 834 5674 or 521 9837005253

Fire/Security: 7-3001
Medical Emergency: 7-3000
Health Center: 7-1923

COSTA MAYA

SHOPPING MAP

International Luxury Brands

FOREVERMARK DIAMONDS

Diamonds International

Diamonds International Watch & Design

HEARTS ON FIRE

Diamonds International

Diamonds International Watch & Design

HUBLOT WATCHES

Diamonds International

Diamonds International Watch & Design

MONT BLANC

Diamonds International

Designer Brands

Ammolite Jewelry by Korite

Diamonds International

Tanzanite International

Bulova Watches

Diamonds International

Crown Of Light Diamonds

Diamonds International

Diamonds International Watch & Design

Ernst Benz Watches

Diamonds International Watch & Design

Fendi Watches

Diamonds International Watch & Design

Fruitz Watches

Diamonds International

Gift Diamond Jewelry

Diamonds International

Diamonds International Watch & Design

John Hardy Jewelry

Diamonds International

Kabana Jewelry

Diamonds International

Diamonds International Watch & Design

Marahlago Larimar Jewelry

Diamonds International

Movado Watches

Diamonds International

Philip Stein Watches

Diamonds International Watch & Design

Raymond Weil Watches

Diamonds International

Safi Kilima Tanzanite Jewelry

Diamonds International Watch & Design

Tanzanite International

Get all of your essential and time-saving information for shopping ashore from Johan!

Stop by the Shopping Desk with any questions you have regarding our upcoming ports of call.

STORE #

1a

**DIAMONDS INTERNATIONAL
DIAMOND SHOPPING PARTY!**

1:00 - 3:00 PM - Join Johan, enter raffle, get a free charm!

An Overview of Costa Maya

Costa Maya is the first Western Caribbean port designed exclusively for the cruise ship industry and is strategically located just hours from Cancun on Mexico's southern Yucatan Peninsula. It is comprised of 2 small villages, Mahahual and Xcalak. While Xcalak is approximately 37 miles south of the

Costa Maya cruise port, the fishing village of Mahahual is only about 2 miles away. Mahahual has soft sand beaches, grass thatched palapas and a coral reef a short distance off-shore called Banco Chinchorro, as well as several bars, restaurants and shops.

Set against the deep turquoise sea, Costa Maya is comprised of three grand pavilions, artisan and costa maya shopping areas, a beach club, saltwater pools, fine restaurants and bars, and all the resources necessary to explore the surrounding jungle and coral reefs. It is the region's most complete and diverse port of call, providing cultural, natural and archeological excursions.

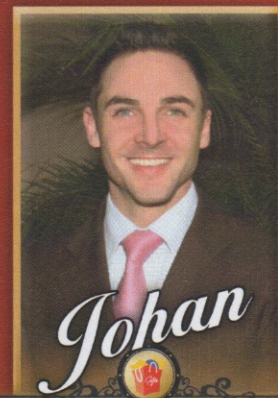
Port Adventures: Check your ticket for the correct meeting time and location for your tour. Your Port Adventures Team will direct you to transportation. Taxi service available outside the cruise terminal.

In Case of Emergency:

Agencia Consignataria del Suereste S.A de C.V
Calle 6 No.14 entre 10 y 15, Colonia Centro 77600
Tel: 011 987 872 4443/3779
E-mail: acostamaya04@prodigy.net.mx

Don't Forget Your:

- Photo ID & Key to the World Card
- Diamond Charm Bracelet Card
- Cash &/or Credit Cards
- VIP Cards



SHOPPING GUIDES

See Johan for your **VIP** shopping card!

PORT SHOPPING MAP



RESTRICTIONS ON U.S. CURRENCY TRANSACTIONS IN MEXICO

In September of 2010, the Mexican government enacted a law limiting the amount of U.S. dollars a Mexican business or individual may deposit into their bank account. Because of this limitation, some of the recommended stores in port may restrict the amount of U.S. dollars they will accept in settlement of your purchases. Please remember to take your credit card into port so that you may be able to take advantage of all the bargains these stores have to offer.

Costa Maya



1a,b DIAMONDS INTERNATIONAL

#1 Recommended Store in the Caribbean

- Over 130 locations, and still family-owned
- Trusted retailer delivering value since 1986
- DTC Sightholder
- Largest Caribbean inventory of GIA and EGL certified diamonds
- Home to the exclusive Crown of Light and Forevermark diamonds
- Design your own piece – and take it when you sail
- Major brands: Hearts On Fire, O Diamond, the Eighty Eight Cut Ammolite by Korite, John Hardy, Marahlago Larimar and Kabana
- Lifetime upgrade: 100% credit toward your new diamond
- Widest array of bridal, anniversary and engagement gifts
- U.S. based customer service center: 1(800) 51- Jewel
- A free diamond charm bracelet or free charm at this location
- Elegant timepieces: Bremont, Bulova, Fruitz, Mont Blanc, Movado, Raymond Weil and Philip Stein
- A wide range of payment options
- Friendly and knowledgeable staff in a comfortable atmosphere

2 TANZANITE INTERNATIONAL

#1 Recommended Store for all Tanzanite

- The Caribbean's largest tanzanite inventory of loose or set goods
- We buy at the source – you get the savings
- Ask how to get your free necklace and tanzanite pendant
- Browse the Safi Kilima collections: Shira, Mawenzi Mlima or Kibo
- Choose from delicate lavender to rich purplish-blue colors
- Tanzanite studs start at \$139
- Select casual or elegant earrings, pendants, bracelets and necklaces
- Rare tanzanite discovered in 1967 in only one Tanzanian locale
- Each piece has a certificate of authenticity
- Graduate gemologists and master jewelers provide certified appraisals
- New York-based customer service center

3 DIAMONDS INTERNATIONAL WATCH & DESIGN

Fine Watches & Designer Jewelry

- Experience the foremost jewelry trends and latest styles
- Luxury jewelry, gemstones and exquisite timepieces
- The best selection in the Caribbean
- Major brands: Crown of Light, Forevermark, Hearts on Fire & Gift
- Top Designers: Kabana, Safi Kilima and Shivaloka
- Asher, Caribbean Topaz, Chameleon
- Fine Timepieces: Ernst Benz, Fendi, Hublot, Movado and Philip Stein
- Watch & jewelry experts and gemologists ready to serve you

4 JADE MAYA MUSEUM STORE

We are in the "Museo Maya" building

- Located on Main Street Costa Maya
- Visit and learn about the Maya calendar and jade
- The most precious stone of the ancient Maya people
- Have your picture taken with the Maya princess
- Maya handicrafts, art work, jade jewelry and Maya textiles
- Every piece has a unique history, great for gift giving
- Free gift for every visitor, no purchase necessary

5 a,b TEQUILERIA INTERNATIONAL

A Must Buy While in Mexico

Tequila, Tequila & More Tequila!

- Over 200 types of tequila
- Bring home a souvenir that is truly Mexican – tequila
- Brands like Agave, Mescal, Añejo, Blanco, and more
- Remember to ask for your free sample
- Tequileria International has the main ingredient for a good time

6 HAVANA CLUB

It's a Little Havana, But a Whole Lot of Fun!


- Large selection of cigars from around the world, including Cuba
- The official retailer of La Casa de Habanos
- Visit our walk-in humidor
- Savor premium brand Cuban cigars
- Monte Cristo, Cohiba, Romeo Julieta, Partagas, and many more
- This store is a "must-visit" for the cigar connoisseur

See
Johan
for your
VIP
shopping
card!





SHOPPING GUIDES




CROWN OF LIGHT®
IRRESISTIBLY BRILLIANT



DIAMONDS®
INTERNATIONAL



Anguilla • Antigua • Aruba • Barbados • Belize • Cabo San Lucas • Cancun • Costa Maya • Cozumel
Curaçao • Grand Cayman • Grand Turk • Jamaica • Juneau • Ketchikan • Key West • Nassau
Playa Del Carmen • Puerto Vallarta • Roatan • Skagway • St. Kitts • St. Lucia • St. Maarten • St. Thomas
www.CrownOfLight.com • www.DiamondsInternational.com • 1-800-51-JEWEL

© PPI 2013 Costa Maya Disney



Shop with confidence at each of the recommended stores. All stores listed on the map have paid a promotional fee and given Disney Cruise Line guests a Buyer's Guarantee valid for 60 days after purchase. This guarantee is valid for repair or exchange. Please note the following conditions that apply to the guarantee: Guest negligence or buyer's regret is excluded. Only appraisals from independent, accredited graduate gemologists not affiliated with any retail jeweler will be considered. Price paid for merchandise or verbal claims or agreements between merchant and guest will not be grounds for returns. Electronics and watches requiring service must be returned by the consumer to the respective manufacturer. All purchases, including fragile items, must be checked before leaving the store. Do not mail merchandise without prior authorization. Guests are responsible for postage and appraisal costs.

PPI Group, 6261 NW 6th Way, Suite 100, Fort Lauderdale, FL 33309, Customer Service: 1.888.774.4768 or 954.377.7777, email: Service@ppigroup.com